

# November 2021 Newsletter



Go to:  
<https://southwestsunchaser.sfmcachapter.shutterfly.com>  
 for our calendar of current events.

**Next Chapter Meeting:**  
 November 17, 2021  
 6 PM for Dinner  
 7 PM for Chapter Meeting  
 Billy Crews  
 Santa Teresa, NM

In This Issue			
In this Issue	1	104 <sup>th</sup> International Convention & RV Expo	7-18
Membership Dues	2	2022 RMMA Region 1 Rally	19-23
Meet Our RMMA Treasurer	3	Celebrations	24
Oktoberfest Fredericksburg, TX	4-5	Chapter Events	25
Christmas on the Pecos	6	FMCA/FMMA Events	27
		Officers/Website	28



# Membership

- FY-2022 CHAPTER MEMBERSHIPS ARE UP FOR RENEWAL:

- \$35.00 PER RIG (TWO PEOPLE)
- \$10.00 EACH PERSON AFTER TWO

- PETS: FREE!!!

# Dues



# RMMA TREASURER

.

## Judy Talmon and Her Husband Rich

We started camping in 1970's when we lived in Buffalo, New York. First, we had a tent, and built a trailer to tow it and all the stuff a young family needs to camp, then a Pop-up trailer, after that a regular trailer. Soon we got tired of packing up every week end a bought some land and a yellow school bus to convert.

Rich and I joined FMCA, when we purchased our first motorhome after moving to Arizona, permenetly in 2012. We have served as Security at many rallies and rambles, along with being active at the Chapter level. We are members of the Arizona and Sun Country Roadrunners. In the Arizona Chapter, Rich is Second Vice President and Webmaster and I serve as Treasurer.

We've been married for 54 years and have three children, nine grandchildren and three great grandchildren. My past history has me sitting the chairs and commencing as President of the Independent Association of Accountants of NY. Also, when I lived in Buffalo, I was Vice President of an Accounting firm for which I still provide both accounting and tax services. We live in Ahwatukee Arizona in Mountain Park Ranch and hope to see you in our travels and remember "Life is a Journey Enjoy the Trip".









## CHRISTMAS ON THE PECOS December 11, 2021

**Celebrate the holidays with an enchanting boat tour through a fairyland of twinkling light displays along the Pecos River.** The 40-minute tours depart from the turn-of-the-century Pecos River Park in Carlsbad and take you past **panoramic views of illuminated islands, boat docks and backyards.** Display themes depict Santa's workshop, the Southwest desert and more as the reflections in the river create a **magical shimmering effect.** Christmas on the Pecos is considered one of the **top 100 "must-see events in North America."**

Make your reservations at: <https://www.christmasonthepecos.com/>  
for the 6 PM excursion



December 9-12, 2021  
Carlsbad KOA



Registration is now open  
At [FMCA.com](https://www.fmca.com)

FMCA'S **104**<sup>TH</sup>  
INTERNATIONAL  
CONVENTION  
& RV EXPO

MARCH 23-26, 2022

PIMA COUNTY  
FAIRGROUNDS

TUCSON, ARIZONA

- FMCA 104th INTERNATIONAL CONVENTION AND RV EXPO FREQUENTLY ASKED QUESTIONS

1. What is a FMCA International Convention and RV Expo? It's four days of everything RVing! Imagine one place where you can meet new friends, renew acquaintances, look through new RVs, shop for items to make your traveling experience more enjoyable, learn more about your RV and the travel lifestyle and be entertained.

2. Why should I attend? FMCA conventions draw folks for a variety of reasons. Some come for the fellowship. Friends who travel together or who plan opportunities to meet down the road find FMCA International Conventions a great place to gather. FMCA members welcome the opportunity to include non-member guests to experience the fun of being part of the FMCA family. Others are interested in finding that next RV to purchase. Many major manufacturers and dealers bring their best and newest products to display. It's the best place to compare brands and shop for that next home on wheels. Conventions also provide attendees with an opportunity to have service performed on their RV.

Knowledgeable technicians discuss problems with owners at the conveniently located FMCA Service Center or at their display. Repairs are arranged on-site or at an off-site repair facility.

Supplier and component exhibits offer one-stop shopping. Everything a RV owner needs and much more can be found in the exhibit buildings. Learning is a major component of any convention, and FMCA's seminar program is second to none.

Featuring technical seminars, educational seminars, make-and-take craft classes, and fun, fitness, and health sessions. If you're serious about discovering more about the RV lifestyle, this is the place to be. FMCA showcases entertainment appropriate for all ages, both throughout the day and in the evening. Getting to or leaving the convention site provides opportunities to explore parts of the country you may not otherwise see. FMCA conventions are unique. There's nowhere else that you can find so much "RVing" going on in one

place. Come experience it for yourself!

LEARN MORE IN TUCSON – RV Basics is a two-and-a-half-day workshop to help owners get acquainted (or reacquainted) with an RV's operation and systems. Taught by experts from the National RV Training Academy, this class is designed to build confidence so you can relax and enjoy your RV without worry. Learn about the newest technology and equipment available, and receive real-life solutions for a variety of RV troubles. Check back for more details about the program as they become available.



- The FMCA Driving Program provides new or inexperienced RVers instruction about how to drive their RV. safely and confidently. The program, developed and taught by experts with the RV Driving School, includes classroom and behind-the-wheel classes for those interested in driving and backing. These classes take place prior to the start of the convention and provide the type of hands-on instruction to help individuals develop the skills necessary for stress-free operation of their RV.
3. What is the location of FMCA's 104th International Convention? The "Sunsets and Saguaros" event will be held at the Pima County Fairgrounds in Tucson, AZ, March 23-26.
  4. How do I register? We offer many different registration options.  
Online at [www.FMCA.com](http://www.FMCA.com).  
By Mail -- Print and fill out the registration form located here at <https://site.fmca.com/fmca-event-registration> or complete the form that's in Family Motor Coaching magazine.  
Fax the completed registration form to (800) 543-4717 or (513) 474-2332.  
Email the completed registration form to [convention@fmca.com](mailto:convention@fmca.com).  
Phone (800) 543-3622 or (513) 474-3622 and ask for the Events Department.
  5. Are there advantages to registering early? Yes! You will receive a savings of \$20 when you register by 11:59 p.m., January 19, 2022.
  6. Will there be on-site registration? Yes. For those who have not pre-registered, there will be a registration desk in the Information Center beginning Sunday, March 20, 2022.
  7. Are children and grandchildren welcome? Absolutely! Unfortunately we do not have a children's program but there are fun things for the kiddos to do on the grounds!
  8. I have friends that I would like to introduce to FMCA. Can they come to our International Convention? Absolutely! If they already own an RV, they can register for a Full Registration, which entitles them to a free one-year membership with FMCA.  
Passports are available if your friends would like to visit the exhibits, go to seminars, participate in social events, and enjoy entertainment but don't want to camp on the grounds. You can purchase a Full Event Passport (pre-registration available) or a Daily Passport (pay at the public gate).

- A Day Pass entitles the guest to visit the coach displays and exhibits only and is available for \$10 per day per person/\$25 for a family of three or more.

9. Is my pet welcome? Yes. Pets must be kept on a leash in the family parking areas unless they are providing service assistance. Pets are not permitted in the exhibit halls or seminar rooms. Please be considerate of others and clean up after your pets. We ask pet owners to complete the pet registry located on the back of the locator card.

10. When will I receive my confirmation packet? Confirmation packets will be mailed as early as January, 26, 2022. Your parking credentials must be mailed to you or held at Will Call for you to pick up.

11. What happens if I have to cancel? Refunds will be made only upon written request ([cancel@fmca.com](mailto:cancel@fmca.com)). Cancellations made by January 21, 2022, will receive a full refund minus \$25 handling fee. Cancellations made after January 21, 2022, but before March 23, 2022, will receive a full refund minus \$50 handling fee. No refunds March 23, 2022, and after. Badges and parking credentials must be returned to the FMCA home office before a refund is issued.

DISCLAIMER: FMCA reserves the right to cancel or postpone any event promoted by FMCA without cause or warning. Should FMCA be forced to cancel an International Convention & RV Expo along with any associated activities, attendees will receive a letter of credit for the registration and service(s) being affected by the cancellation. Equivalent utilities/services at a future event may not be available at a particular venue, so the closest option will be provided.

12. Are the exhibits open to the public? Absolutely! FMCA members AND guests who choose not to camp on the grounds are welcome to attend. Public parking will be available at the CAM-PLEX Multi-Event Facilities. The public gate ticket booth will be open Wednesday, Thursday, and Friday from 8:00 a.m. to 5:00 p.m., and Saturday from 8:00 a.m. to 4:00 p.m.

- 13. What are the hours of the exhibits? Wednesday, March 23 – 1:00 PM to 5:00 PM  
Thursday, Friday, and Saturday March 24, 25, and 26 – 9:00 AM to 5:00 PM

Please see the "Exhibitor Information" section of this program for locations and booth numbers of all exhibitors.

Attention Families: Hazardous conditions (forklifts, cranes, trucks, and trailers) exist in the exhibit areas prior to the opening of the event.

Please help reduce the risk of injury by not entering the exhibit areas before 12:00 p.m. on Wednesday, March 23. It is difficult to finalize displays with visitors present. Thank you for your cooperation.

14. What products will be displayed at the RV Expo? You'll find the latest RV models, components, and accessories. There will be hundreds of new RVs on display, and many manufacturers and dealers have demo vehicles for test drives. We also have hundreds of component/supplier companies displaying a wide range of components and accessories.

15. How can I exhibit? For exhibit registration information, contact FMCA's Sales Department at (800) 543-3622, ext. 214 or 254. Or, send an e-mail to [conventionexhibitor@fmca.com](mailto:conventionexhibitor@fmca.com). Download the Exhibitor Brochure for more information.

16. Tell me about the seminars. Whether you are an experienced RV owner or new to the lifestyle, you'll find that FMCA's seminars cover all of the bases. The seminar schedule will be listed in the program, which you will receive in your Welcome Bag, online, and on the event app. Seminars encompass a wide variety of topics, including technical classes on different aspects of RV maintenance, fuel efficiency, health, fitness, healthy cooking, travel, and many make-and-take craft classes. Seminars will be held on Wednesday, Thursday, Friday, and Saturday, March 23, 24, 25, and 26. Seminars are not open to the general public.

17. Do I have to sign up for seminars? Those who purchased Full Registration, or a Passport are entitled to attend all seminars. Seating is limited in some of the seminar areas and may fill up early. Be sure to wear your event badge. There may be several seminars that require pre-registration and a fee. More information about these classes will be added as information is available. A fee for materials will be charged for make-and-take craft classes. Registration for these sessions begins on Wednesday, March 23, at 8:00 a.m. in the Information Center. Classes fill up quickly, so it is recommended that you arrive early at the Information Center on Wednesday to register for crafts.

18. What is the scheduled entertainment? Evening entertainment is open only to registered attendees (Full Registration and Passports). The lineup details are still being ironed out, so check back for more information as the convention date gets closer. Daytime entertainment is open to all attendees, including public gate patrons.

- 19. Is RV service available? Several companies will provide service during the event. Some will take pre-event appointments.  
Additional information about these companies will be sent to registered attendees prior to the event. A service center will be open in the Information Center on Wednesday, March 23, from 8:00 a.m. to 12:00 p.m. to sign up for service. After 1:00 p.m. and for the rest of the show, service appointments can be arranged at company booths when the exhibits halls are open. After signing up for an appointment, the service van will meet you at your RV in your parking area. Please do not bring your RV to the Service Center. Service is limited, and some firms may direct you to service facilities outside the grounds. Firms not participating at the Service Center should be contacted at their exhibit booth. RV service is reserved for attendees registered for the event and residing on the event grounds.
- 20. What is Will Call? If you would prefer that your credentials, not be mailed, either because you're traveling or won't be able to pick up mail, you can choose to have them held for pickup when you arrive. You will be provided instructions via e-mail about where to pick up your credentials as the convention nears.
- 21. What is the Arrival Area? This is a place where FMCA families and event guests meet friends so they can park together, and where attendees who arrive prior to assigned parking days can wait for their assigned time to enter the grounds.
- 22. Where will everyone be parked? All parking will be at the Pima County Fairgrounds.
- 23. What is the surface of the parking lots? The parking lots are mostly asphalt and grass.
- 24. Will electric service be available? Registration + Non-Electric Camping is \$225 before January 19, and \$245 after. Registration + 30-Amp Electric is \$420 before January 19, and \$440 after. Registration +30-Amp Full is \$525 before January 19, and \$545 after. Registration + 50-Amp Electric is \$540 before January 19, and \$560 after. Registration + 50-Amp Full is \$675 and \$695. If you desire to have electric service, do so when you register. Electrical service will be provided by generators and fairgrounds electric. An additional 10-gauge electric cord may be necessary if your RV cord does not reach the provided 30-amp or 50-amp receptacle. FMCA also encourages members to have surge protectors on power cords leading to the electrical panel.
- 25. Is there a dump station and fresh water available? There will be an on-site dump station with potable water. FMCA has arranged pump-out roving services that may be purchased in the Information Center, Wednesday through Saturday. Fresh water is also available on-site or may be purchased and delivered. Please arrive with empty holding tanks and a full water tank. While fresh water and a dump station will be available, we ask that you do not attempt to drive to these facilities while RV parking is taking place.



• 26. Will I be able to stay on property after the event? All families must leave the grounds by 12 p.m. on Sunday, March 27. If you would like to stay longer, further instructions will be available in the event program and event app.

27. What is a Welcome Bag (aka Goody Bag)? The Welcome Bag contains your program, daily schedule of events and map, and the "Today"

newsletter, among other items. Members of the Welcome Crew will be at distribution stations in the parking lots to give you a Welcome Bag. The Welcome Bag is also known as a Goody Bag.

28. What is the on-site address so I can have my mail sent to me? Mail for family members sent to the address below will be sorted and available at the Information Center, beginning at noon on Wednesday, March 23.

If you plan to pick up your mail at the post office in Tucson, the address for general delivery is:

The official address to have mail forwarded to the "Tucson's Sunsets and Saguaros" International Convention is:

Your Name and Member Number  
c/o Family Motor Coach Association  
Pima County Fairgrounds  
11300 S Houghton Rd  
Tucson, AZ 85747

29. May I bring my golf cart, scooter, bike, moped, or Segway? Segways, scooters, and similar motorized devices are permitted on the grounds; however, they may not be used inside any exhibit hall, evening entertainment area, or other indoor area due to large crowds. Licensed vehicles are not permitted inside the exhibit areas and should not be parked in areas that block fire evacuation. Due to the number of people visiting indoor displays, only wheelchairs and personal mobility carts are

permitted in these areas. Your cooperation is greatly appreciated. By registering for this event, you understand that you must carry valid insurance on your personal mobility cart and or personal golf cart during the event.

30. Will golf cart rentals be available? Golf carts will be available for rent in Tucson. Check back for more information on rentals. Lights must be used on these vehicles before dawn or after dusk.

31. How is the weather? Beautiful! Be sure to pack your sunglasses, but don't forget your umbrella! It's usually very pleasant in

March in Tucson with mostly sunny days, but it is the start of spring, so don't be surprised by rain and chilly temperatures. Expect daytime temperatures in the low 70s.



- 32. Where can I find information about the Tucson area? The Tucson Convention and Visitors Association will have representatives at the FMCA Information Center starting Tuesday, March 22 through Saturday, March 26, to answer your questions regarding local sites, tours, directions, restaurants, and services in the area.

33. What if I have a question that isn't answered here? Give FMCA's Staff a call: (800) 543-3622 or e-mail them at [convention@fmca.com](mailto:convention@fmca.com).





fumminsfamilyroadtrip



Pima County Fairgrounds  
Tucson, AZ

### LEGEND

- Flag Pole
- Restrooms
- Showers
- Laundry
- RV Dump Site
- Trash
- Dog Park for Large and Small
- Drinking Fountain
- Pet Waste Station
- Bench
- 50 Amp Full Hookup
- 30 Amp Full Hookup
- 30 Amp/50 Amp Full Hookup
- 50 Amp Water Only

11300 S Houghton Rd • Tucson, AZ 85747-9755  
 Office: 520-762-8579 Fax: 520-762-5005  
 www.The-RVPark.com  
 E-mail: office@pimacountyfair.com



Brekke Road

ENTRANCE  
EXIT  
Brekke Rd Gate Entrance





# FMCA'S 104TH INTERNATIONAL CONVENTION & RV EXPO

MARCH 23-26, 2022

PIMA COUNTY FAIRGROUNDS

TUCSON, ARIZONA

SEMINARS • INDOOR EXHIBITS  
RV DISPLAYS • GAMES  
ICE CREAM SOCIAL • ENTERTAINMENT

### I/WE OWN A:

Motorhome  Trailer  Fifth-Wheel

### VOLUNTEER OPPORTUNITIES

See reverse for details and options.

### BECOME A MENTOR

I would like to be a mentor

### REGISTRATION FEES

See reverse side for parking descriptions, mailing procedures, parking procedures, and additional volunteer information.

	EARLY BIRD RECEIVED BY 1-19-22	RECEIVED AFTER 1-19-22	AMOUNT DUE
<b>SELECT ONE</b>			
Registration + Non-Electric Camping <sup>1,2</sup>	\$225	\$245	
Registration + 30-Amp Electric <sup>2</sup>	\$420	\$440	
Registration + 30-Amp Full <sup>2</sup> (limited availability)	Sold Out	Sold Out	
Registration + 50-Amp Electric <sup>2</sup>	\$540	\$560	
Registration + 50-Amp Full <sup>2</sup> (limited availability)	Sold Out	Sold Out	
RV with 1 Person – Deduct \$20	-\$ 20	-\$ 20	
Each Additional Guest (complete info above)	\$ 20	\$ 20	
Passport – 2 People (no overnight parking)	\$185	\$205	
Passport – 1 Person (no overnight parking)	\$165	\$185	
Ladies' Luncheon – Thursday, 3/24, 11:30 a.m. <sup>3</sup>	\$ 15	\$ 15	
Magic Mile Walk/Run – Friday, 3/25, 8 a.m. <sup>4</sup>	\$ 10	\$ 10	
Payment Plan <sup>5</sup> (credit card only)	HALF DUE	N/A	
	<b>TOTAL AMOUNT DUE</b>		

<sup>1</sup> 6 a.m. to 11 p.m. Generator, No Generator, Full Generator / <sup>2</sup> Includes registration and camping for pilot and copilot / <sup>3</sup> Taco salad bar, drink, and dessert / <sup>4</sup> Proceeds to chosen activity charity / <sup>5</sup> See reverse for details

### FMCA EVENTS WAIVER AND RELEASE OF LIABILITY FOR EXPOSURE TO COVID-19

As a condition to attending this FMCA event, each attendee hereby acknowledges, certifies, and agrees to the following: 1) The registered attendee agrees to comply with COVID-19 protocols required by applicable government bodies, FMCA, and/or venue mandates. Failure to do so may result in the attendee being asked to leave the event and may result in the forfeiture of any registration fee; 2) Regardless of adherence to mandated protocols, requirements and recommendations, there is a risk of COVID-19 exposure whenever an individual enters a public space, a building with other people, or is in a crowd of individuals. By attending this event, the registered attendee assumes the risk of COVID-19 exposure; 3) Knowing the foregoing risk, the registered attendee accepts sole responsibility for any exposure to COVID-19 and resulting health conditions that may occur as a result of attendance at this event; 4) The registered attendee hereby releases and holds harmless Family Motor Coach Association, the producers of this event, and its respective officers, directors, and staff from any and all responsibility for illness, death, or other losses arising from exposure to COVID-19 at the event; 5) The registered attendee acknowledges that FMCA/Resist does not cover COVID-19.

### PERSONAL INFORMATION

Permanent changes to membership files cannot be made from this form

MEMBER # PILOT FIRST NAME PILOT LAST NAME

COPILOT FIRST NAME COPILOT LAST NAME

ADDRESS (Confirmation packet and ordermails will be sent here)

CITY STATE/PROVINCE ZIP/POSTAL CODE

AREA CODE/HOME PHONE

AREA CODE/CELL PHONE

EMAIL ADDRESS (REQUIRED)\*

RV MANUFACTURER RV LENGTH

I am/we are First Time Attendee(s)

### GUESTS

Immediate family and those under 18 years old are free. Those 18 and older who are not immediate family are \$20 each.

GUEST NAME AGE

GUEST NAME AGE

### \*EMAIL ADDRESS

You agree to allow FMCA to contact you at this email address with convention related communications.

### CONFIRMATION & PARKING CREDENTIALS

Parking credentials will be mailed to the mailing address provided, unless you ask to have them held at Will Call.

Hold credentials at Will Call

### PLEASE INDICATE YOUR PARKING PREFERENCE

See reverse for descriptions

General (Generators 6AM-11PM)

Electric

Full Generator

No Generator

External Generator (5AM-11PM)

PND/Committee

Disabled Parking Needed<sup>†</sup>

<sup>†</sup> A current state-issued disability placard must be visible upon arrival.

### PAYMENT INFORMATION

To pay by credit card please call 800-543-3622. All major credit cards accepted. Make checks and money orders payable to Family Motor Coaching, Inc. in U.S. funds.

### AFTER MARCH 15, 2022, REGISTRATIONS WILL ONLY BE TAKEN ON SITE.

The Arrival Area and Will Call in Tucson will open on Sunday March 20, 2022, at 8 a.m.

### CANCELLATION POLICY

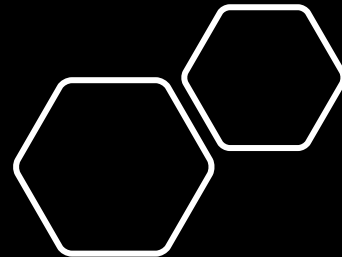
Refunds for this convention will be made only upon written request (conreg@fmca.com). Cancellations made by January 19, 2022, will receive a full refund minus \$25 handling fee. Cancellations made after January 19, 2022, but before March 23, 2022, will receive a full refund minus \$50 handling fee. Absolutely no refund after March 23, 2022, and after. Badges and confirmation materials must be returned to the FMCA home office before any refund is issued.

### I AGREE

By checking "I AGREE," the attendee affirms that he or she has read and understands the waiver and release; understands the risks posed by COVID-19; and agrees on behalf of himself/herself and all others listed on this registration.

### RETURN FORM TO

FMCA/Events Dept.  
8291 Clough Pike  
Cincinnati, OH 45244



*RMMA Region 1 Rally*

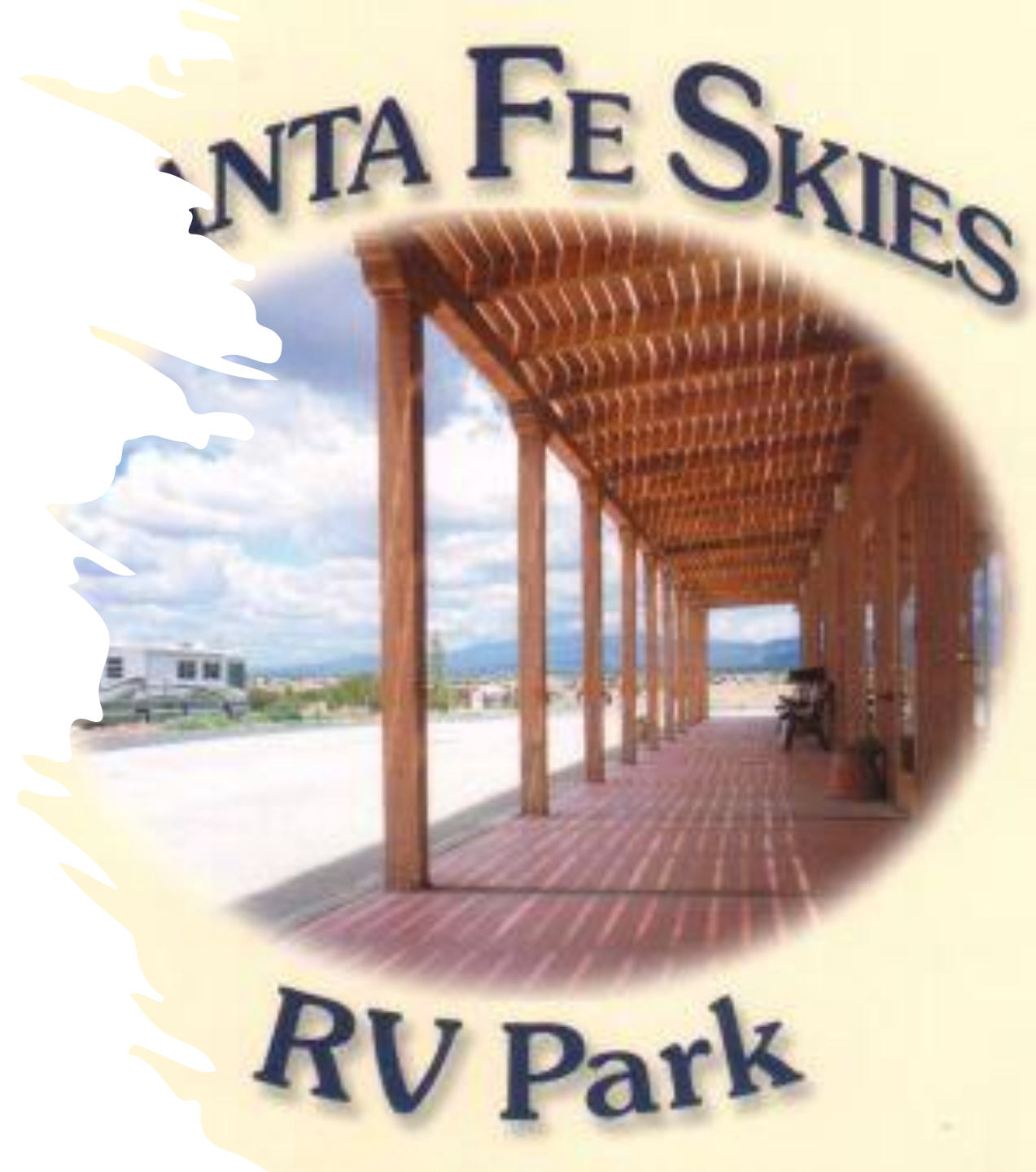
*June 15-19, 2022*

*TIME TO CALL AND MAKE  
YOUR RESERVATIONS:*

*Toll Free: [1-877-565-0451](tel:1-877-565-0451)*

*Local: (505)473-5946*

- Nestled on the Western Slopes of the Sangre de Cristo Mountains looking out upon the vast Rio Grande Valley, the City of Santa Fe has stood for nearly four hundred years underneath beautiful blue New Mexico skies. Santa Fe Skies RV park is located just south of Santa Fe city rested on the top of a hill. Visitors can enjoy the wonders of the nation's oldest capital city and take in the spectacular beauty of the region. Enjoy our beautiful panoramic view of the total Santa Fe area with unobstructed sunrise and sunset views from the Turquoise Trail!





- [98 Sites](#)
- 55 Pull-thru Sites
- 43 Back-in Sites
- 20/30/50 Amp Service, All Sites
- Water, All Sites
- 97 Sewer Sites
- 97 Patio Sites
- Free Wifi
- Propane
- Laundry
- Restrooms & Showers
- Dump Station
- Walking Trail

Santa Fe Skies RV Park is family built, owned and operated. It sits on 17 acres overlooking the beautiful mountains of Santa Fe, New Mexico. We are "Big Rig friendly". Fifty five sites are pull-thrus designed to accommodate large motor coaches and travel trailer rigs. All sites are equipped with 20/30/50 amp electrical service. Water and Sewer are available at all pull-thru and almost all back-in sites. We are "pet friendly". Free Wifi is available.

The RV Park is within a short driving distance to two major shopping malls (one an outlet mall), several restaurants, a large supermarket and other local businesses. We are [located](#) just off the scenic Turquoise Trail, which includes the historic Villages of Cerrillos and the artist center of Madrid. It is only a short distance from the 17th Century Spanish Colonial Living History Museum, El Rancho de Las Golondrinas, which was the last overnight stop for travelers coming to Santa Fe on the El Camino Real from Mexico.

The city of Santa Fe is located at the base of the Sangre de Cristo mountains at an altitude of 7,000 ft. above sea level. (That is 1,500 ft. higher than Denver, Colorado.) Since the Santa Fe Skies RV Park sits on a ridge just outside of town, you get a panoramic view of the entire Santa Fe area! Not only can you see the historic Sangre de Cristo Mountains, where the sunset makes the mountains shine with a red glow in the evening (hence the name "Sangre de Cristo" or "Blood of Christ"), you can also see the Jemez Mountains to the west, and in the south and southwest the Cerrillos Hills, the Ortiz Mountains and the Sandia Peak at the base of which lies the city of Albuquerque.

- **Common questions:**

- Wifi

- Our Wifi is free, it is intended to be operational throughout the park.
- We have both secure and non secure wifi. The office has the secure code. There is no such thing as a truly secure Wifi connection.

- Phones

- Verizon, Sprint, T-Mobile and At&T phones have been verified to work. Others are likely to work.

- Television

- We do not have Cable TV.
- Using an over the air antenna, you should be able to receive fox, nbc, abc, pbs and cbs.

- Trash

- The dumpster is near the entrance on the left hand side if you are leaving. It is behind an Orange wrought Iron gate and has a side entrance.

- Mail

- We accept mail for our clients and have boxes for long term customers. Use your name with our address.
- The Mailbox just outside the entrance has a mail drop in the upper left corner.
- USPS drops off around 2pm
- UPS drops off packages between 2pm and 8pm normally
- FedEx Ground shows up between 4pm and 6pm normally.
- FedEx Air shows up between 10am and 3pm normally.

- Pets

- County and City law requires dogs to be on a leash when outside with their owner. We also have stations around the park that provide clean up bags so owners can pick up after their dog. We strongly encourage owners to clean up after their pets.

- Rig Washing

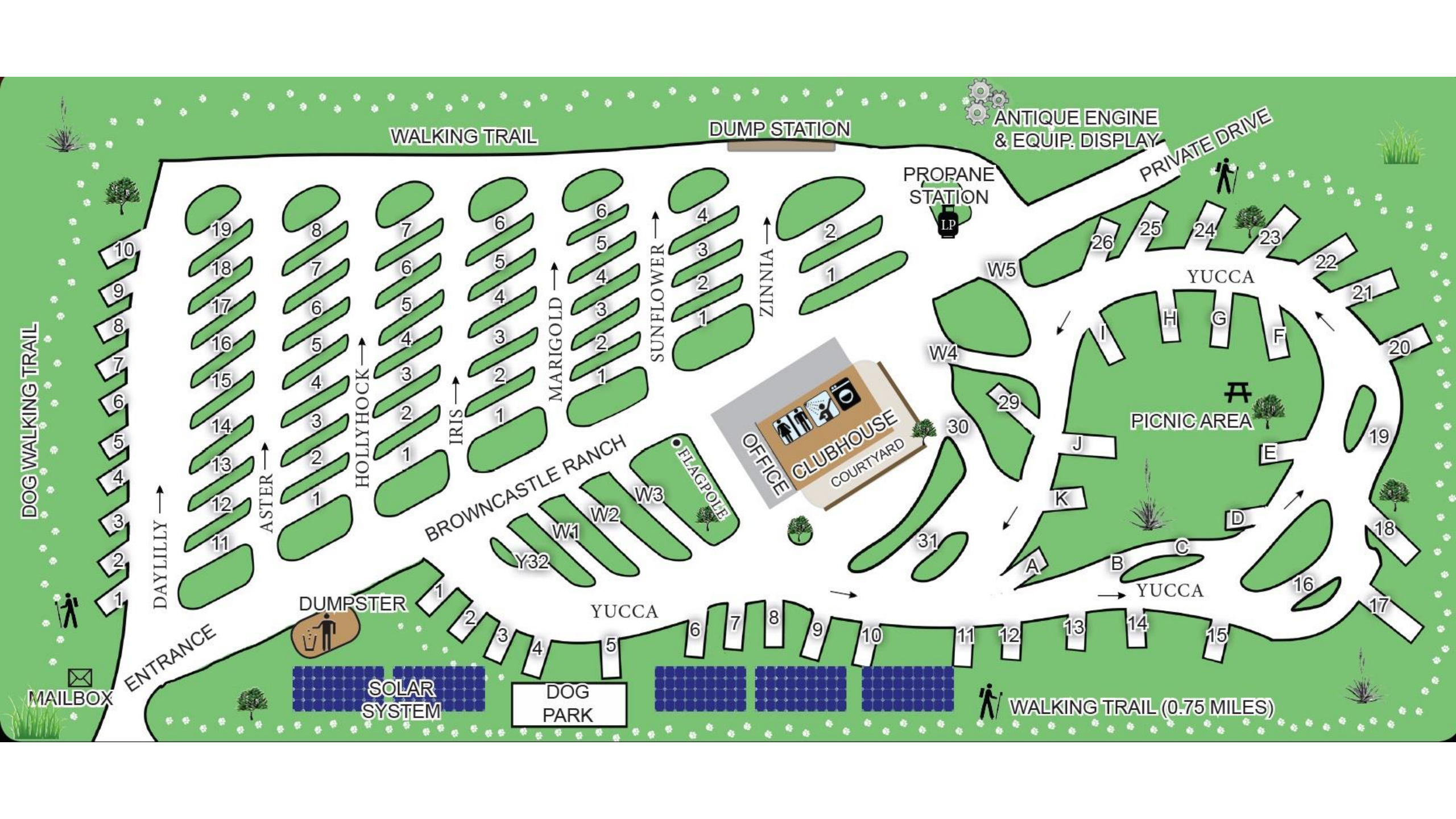
- Washing of Rigs is allowed but we encourage the sensible use of water as we are located in an area with strict water rules. Please use a bucket and toss the excess on a tree.

- Campfires

- Due to our naturally dry weather, fires are discouraged. If a fire meets the county fire code, it is allowed.

- **Other Services**

- Antique gas engines on display.
- Large and small conference rooms available for RVer special functions. The large conference room is equipped with a surround sound and video system with a large screen.







Please update your birthday and anniversary information with Lisa T. so we can celebrate with you!!!!

- November Birthdays
- Jill Parker
- Bob Linville
- Cindy Massey





**Upcoming Chapter Rallies:** Please see our chapter calendar for details: [Southwest Sun Chasers FMCA Chapter \(shutterfly.com\)](http://SouthwestSunChasersFMCAChapter.shutterfly.com)



November 11/12-15-2021

Rodeo, NM

April 1-3- 2022

Tucson, AZ

Event: Fourth Street Festival

December 9-15-2021

Carlsbad, NM

Event: Christmas on the Pecos 12/11 at 6:00 PM

May 27-30/31, 2022

Silver City, NM

Event: Silver City Blues Festival

January 14-16-2022

Elephant Butte, NM

September 2-6, 2022

Aztec, NM

February 3-7-2022

Tucson, AZ

Event: Tucson Gem and Mineral Show

August 31/September 1-5, 2022

Lyman Lake, AZ

Event: Springerville Rib Throwdown

March 10/11-14

Columbus, NM

Event: Camp Furlong Days



## FMCA and RMMA Events in our Area for 2022

- **RMMA Region 1 Rally**
- June 15-19/20, 2022
- Santa Fe Skies, Santa Fe, NM
- Reservations are now being taken by the park.
- RMMA Region 1 will host.
- Please consider being a volunteer

### FMCA International Expo

Tucson, AZ

March 23-27, 2022

Please go to [FMCA.com](https://www.fmca.com) for details!

RMMA Ramble

Tucson, AZ

October 19-23, 2022

Details Coming Soon.

Southwest Sun Chasers Chapter Officers:  
William (Bill) Massey: President & National Director 915-497-6255  
Wilson Mendez: Vice-President & Alternate National Director 915-850-3774  
Kathy Linville: Treasurer 575-644-3465  
Lisa Telford: Secretary 915-238-8342

Southwest Sun Chasers  
Rocky Mountain Motorhome Association (RMMA) Family Motor  
Coach Association (FMCA)

Email:  
[Southwestsunchasers.fmca@gmail.com](mailto:Southwestsunchasers.fmca@gmail.com)

Newsletter Editor: William Massey

